



4Diamond Grid

Professional video wall solutions



There is no such thing as a standard control room; every project is different and presents a unique set of challenges. The 4Diamond Grid product range equips systems integrators with the tools they need to overcome those challenges confidently and cost-effectively.

4Diamond Grid delivers the image quality you'd expect from Mitsubishi Electric in an affordable and versatile extension to our range of high-end DLP™, LCD and Direct View LED control room display systems.

4Diamond Grid Video Wall Monitors



DG49ENB503

DG55ENB503



DG55ENB703

The Key Features

49" and 55" diagonal Full HD resolution

Designed for continuous 24/7 operation

DG55ENB/DG49ENB 0.9 mm extreme narrow bezel

DG55RZ 0.44 mm razor-thin bezel

Intelligent Pixel Shift (IPS) anti-image retention feature

Supports 4K daisy chain via Display Port 1.2a

Portrait and landscape orientation modes

500 and 700 cd/m² brightness versions available

Manual precision color calibration feature

Open content management support

Built-in video wall scheduler

Auto-switch on input signal failure

Fully compatible with Mitsubishi Electric S-SF Suite and 4DG Controllers



DG55RZ503



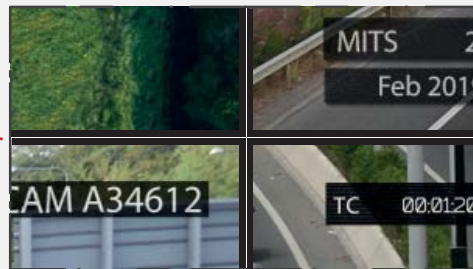
DG55RZ703

Cutting edge Image



DG49ENB

DG55ENB



0.9 mm

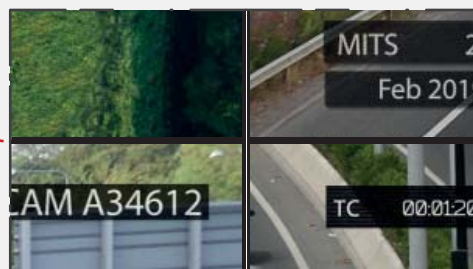
Bezel to Bezel
1.8 mm

0.9 mm

Thanks to its 1.8 mm extreme narrow bezel, 4Diamond Grid 49" and 55" video wall delivers a superb, multi-window, virtually seamless display that's ideal for small breakout rooms or crisis suites. But for truly stunning performance, the 0.88 mm Razor-thin bezel 55" takes LCD video wall to a completely new level. Thanks to its <1 mm screen separation, Razor achieves virtually seamless image quality but with the ease of installation and cost-effectiveness of tiled LCD.



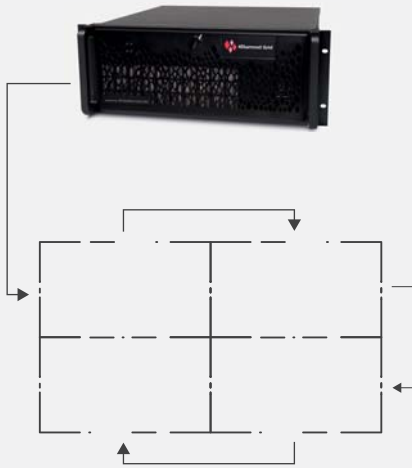
DG55RZ



0.44 mm

Bezel to Bezel
0.88 mm

0.44 mm



The Connectivity

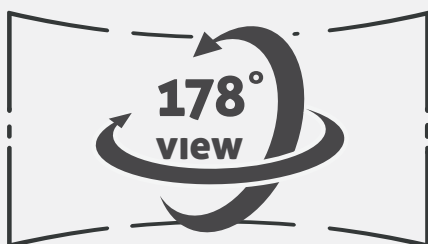
Using DisplayPort™ 1.2a, easily configure four monitors in a 2x2 format via daisy-chain connection to achieve a 4K display with stunning colors and clarity.

DIGITAL INPUT:
HDMI 2.0 x 1
DVI-D (with HDCP) x1
DisplayPort™ (1.2a) x1

ANALOG INPUT
D-Sub 15 x1
YPbPr (BNC x3) x1

White Color Calibration

For the purest color reproduction and minimized color distortion, color calibration has been made available using the optional colorimeter. Measuring a set of color patterns will calculate RGB gain values based on the color alignment algorithm. The White balance setting for the target color temperature will be updated using the calculated RGB gain values.



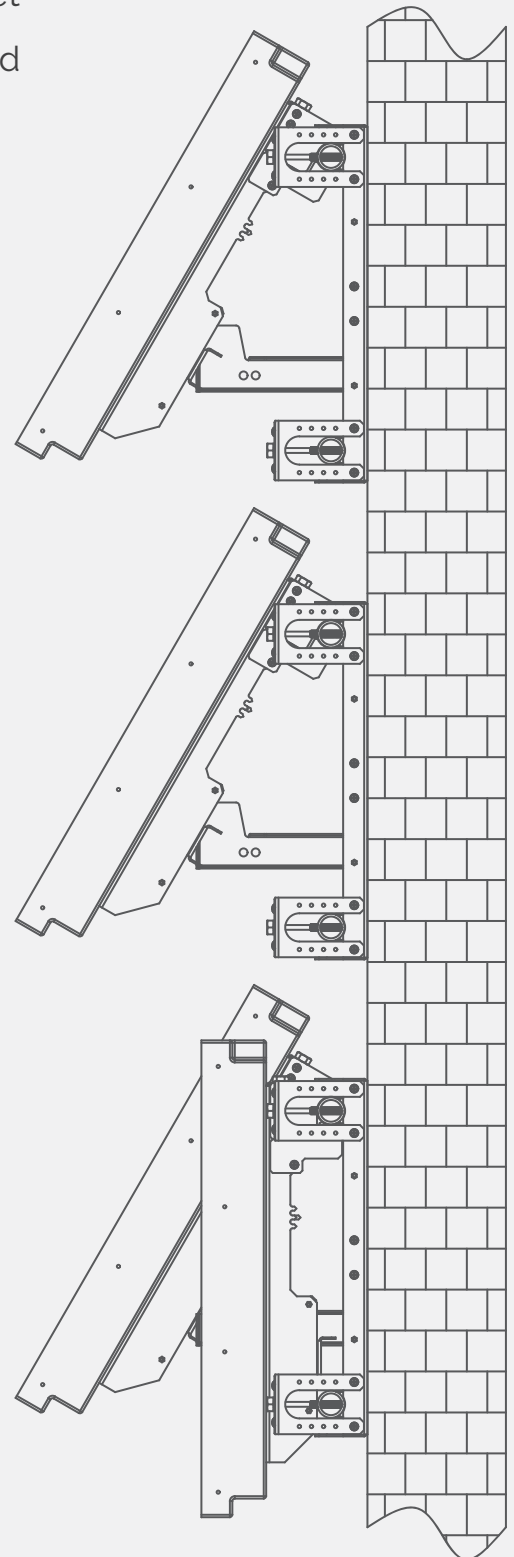
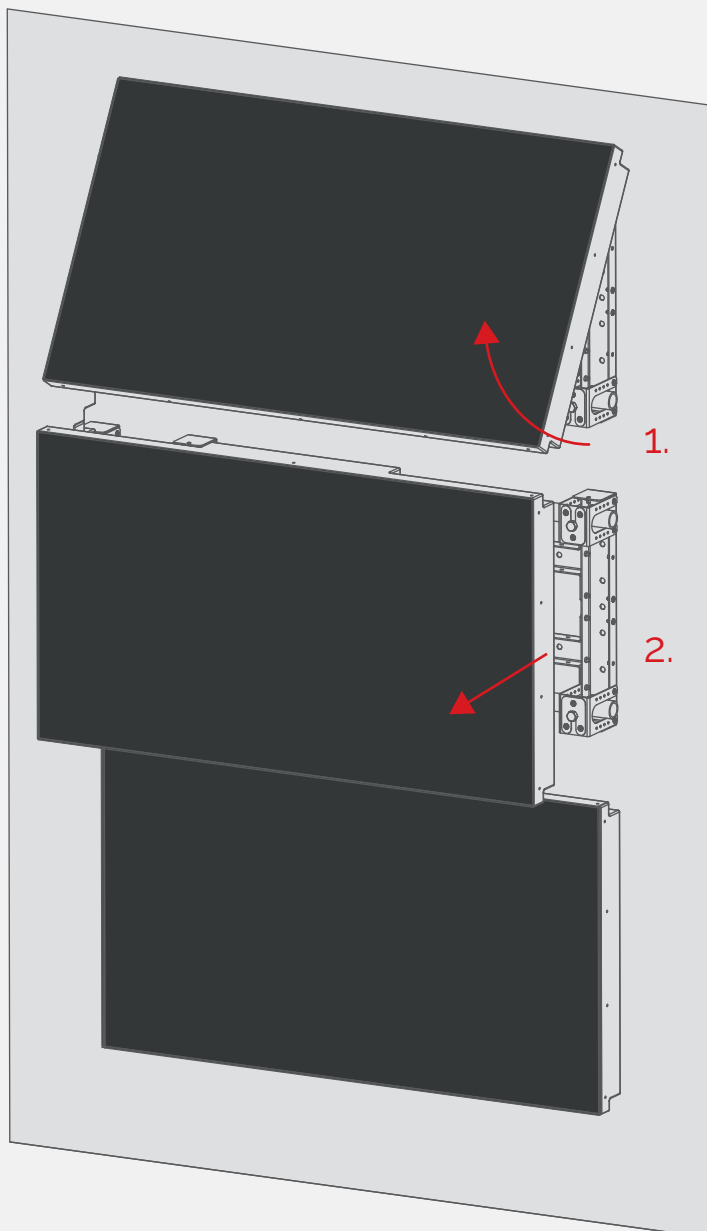
Wide viewing angle

Intelligent Pixel Shift (IPS) technology not only protects the display from image retention damage but also improves viewing angle and image clarity. Images remain vivid and bright no matter from where in the room they're viewed.

Easy setup and maintenance

The optional 4Diamond Grid wall-mount bracket **DG55ENB-BRK** makes installation easy, quick and precise – each and every time.

(Also suitable for DG49ENB503 model.)



This illustration explains how to remove a monitor.

1. First Lift the top monitor
2. Remove monitor below

The Specifications

Model	DG 49ENB503	
Dimensions	1075,7 mm (L) x 605,9 mm (H) x 91,9 mm (D)	
LCD Type	IPS 24/7	
Display resolution	Full HD (1920x1080 pixels) 60Hz	
Lifetime (typ.)	60,000 hours* ¹	
Backlight technology	LED (Direct)	
Viewing angle (H /V)	178°	
Display orientation	Landscape and Portrait Mode	
Brightness	500 cd/m ²	
Contrast ratio	1300:1	
Display colors	10 bit (D), 1.07 Billion colors	
Input connectors	Video	DisplayPort™ (1.2a) x 1, HDMI 2.0 x 1, DVI-D (with HDCP) x 1 D-sub 15 x 1, YPbPr (BNC) x 1
	Control	RS-232C: (D-Sub 9 pins), RJ12, LAN: RJ45 (10BASE-T/100BASE-TX), SNMP Compatible
	Audio	F3.5 Jack
Output connectors	Video	DisplayPort™ (1.2a) x 1, HDMI 2.0 x1
	Audio	F3.5 Jack
Signal frequency	H: 67,5 KHz V: 60 Hz Max. Pixel Freq. 74,25 MHz	
Power consumption	Full load 116 W	
Voltage range	100 - 240 VAC ± 10 %, 50/60 Hz ± 1 Hz	
Weight	27,4 kg	
Operating environment	0 - 50 °C (32 - 122 °F) / 20- 80 % RH non-condensing	
Functions	Videowall setup with Daisy- Chain (DP1.2a) up to 7 units w/HDCP, no limit w/o HDCP Scaling function: up to 10(units) x 10(units) Open Content Management Support, Manual Fine Color Calibration* ² , Videowall Scheduler, Auto-Launch, Auto switch on Failover, Panel Lock	
Optional	Wall-mount bracket DG 55ENB-BRK	

*¹ No image staining occurs even in 24-hour operation, although image persistence still happens if a static image is displayed for a long period of time.

*² For the purest color reproduction and minimized color distortion, color calibration has been made available using the optional colorimeter. Measuring a set of color patterns will calculate RGB gain values based on the color alignment algorithm. The White balance setting for the target color temperature will be updated using the alculated RGB gain values.

- DisplayPort™ is a trade mark of the Video Electronics Standards Association, registered in the U.S. and in other countries.
- The terms HDMI and HDMI High Definition Multimedia interface, and the HDMI logo are trademarks or registered trademarks of HDMI Licensing, LLC in the U.S. and in other countries.
- Information and specifications in this document are subject to change without prior notice.

The Specifications

Model		DG55ENB503	DG55ENB703
Dimensions	1211,5 mm (L) x 682,3 mm (H) x 104,6 mm (D)		
LCD Type	IPS 24/7		
Display resolution	Full HD (1920x1080 pixels) 60Hz		
Lifetime (typ.)	60,000 hours* ¹		
Backlight technology	LED (Direct)		
Viewing angle (H /V)	178°		
Display orientation	Landscape and Portrait Mode		
Brightness	500 cd/m ²	700 cd/m ²	
Contrast ratio	1400:1		
Display colors	10 bit (D), 1.06 Billion colors		
Input connectors	Video	DisplayPort™ (1.2a) x 1, HDMI 2.0 x 1, DVI-D (with HDCP) x 1 D-sub 15 x 1, YPbPr (BNC) x 1	
	Control	RS-232C: (D-Sub 9 pins), RJ12, LAN: RJ45 (10BASE-T/100BASE-TX), SNMP Compatible	
	Audio	F3.5 Jack	
Output connectors	Video	DisplayPort™ (1.2a) x 1, HDMI 2.0 x1	
	Audio	F3.5 Jack	
Signal frequency	H: 67,5 KHz V: 60 Hz Max. Pixel Freq. 74,25 MHz		
Power consumption	Full load 140 W	Full load 195 W	
Voltage range	100 - 240 VAC ± 10 %, 50/60 Hz ± 1 Hz		
Weight	30,5 kg		
Operating environment	0 - 50 °C (32 - 122 °F) / 20- 80 % RH non-condensing		
Functions	Videowall setup with Daisy- Chain (DP1.2a) up to 7 units w/HDCP, no limit w/o HDCP Scaling function: up to 10(units) x 10(units) Open Content Management Support, Manual Fine Color Calibration* ² , Videowall Scheduler, Auto-Launch, Auto switch on Failover, Panel Lock		
Optional	Wall-mount bracket DG55ENB-BRK		

*¹ No image staining occurs even in 24-hour operation, although image persistence still happens if a static image is displayed for a long period of time.

*² For the purest color reproduction and minimized color distortion, color calibration has been made available using the optional colorimeter. Measuring a set of color patterns will calculate RGB gain values based on the color alignment algorithm. The White balance setting for the target color temperature will be updated using the alculated RGB gain values.

- DisplayPort™ is a trade mark of the Video Electronics Standards Association, registered in the U.S. and in other countries.
- The terms HDMI and HDMI High Definition Multimedia interface, and the HDMI logo are trademarks or registered trademarks of HDMI Licensing, LLC in the U.S. and in other countries.
- Information and specifications in this document are subject to change without prior notice.

The Specifications

Model		DG55RZ503	DG55RZ703
Dimensions	1210.67 mm (L) x 681.52 mm (H) x 89.6 mm (D)		
LCD Type	IPS 24/7		
Display resolution	Full HD (1920x1080 pixels) 60Hz		
Lifetime (typ.)	60,000 hours ^{*1}		
Backlight technology	LED (Direct)		
Viewing angle (H /V)	178°		
Display orientation	Landscape and Portrait Mode		
Brightness	500 cd/m ²	700 cd/m ²	
Contrast ratio	1100:1		
Display colors	10 bit (D), 1.06 Billion colors		
Input connectors	Video	DisplayPort™ (1.2a) x 1, HDMI 2.0 x 1, DVI-D (with HDCP) x 1 D-sub 15 x 1, YPbPr (BNC) x 1	
	Control	RS-232C: (D-Sub 9 pins), RJ12, LAN: RJ45 (10BASE-T/100BASE-TX), SNMP Compatible	
	Audio	F3.5 Jack	
Output connectors	Video	DisplayPort™ (1.2a) x 1, HDMI 2.0 x1	
	Audio	F3.5 Jack	
Signal frequency	H: 67.5 KHz V: 60 Hz Max. Pixel Freq. 74.25 MHz		
Power consumption	Full load 252 W	Full load 223 W	
Voltage range	100 - 240 VAC ± 10 %, 50/60 Hz ± 1 Hz		
Weight	TBD		
Operating environment	0 - 40 °C (32 - 1104 °F) / 0 - 90 % RH non-condensing		
Functions	Videowall setup with Daisy- Chain (DP1.2a) up to 7 units w/HDCP, no limit w/o HDCP Scaling function: up to 10(units) x 10(units) Open Content Management Support, Manual Fine Color Calibration ^{*2} , Videowall Scheduler, Auto-Launch, Auto switch on Failover, Panel Lock		
Optional	Wall-mount bracket DG55ENB-BRK		

^{*1} No image staining occurs even in 24-hour operation, although image persistence still happens if a static image is displayed for a long period of time.

^{*2} For the purest color reproduction and minimized color distortion, color calibration has been made available using the optional colorimeter. Measuring a set of color patterns will calculate RGB gain values based on the color alignment algorithm. The White balance setting for the target color temperature will be updated using the alculated RGB gain values.

- DisplayPort™ is a trade mark of the Video Electronics Standards Association, registered in the U.S. and in other countries.
- The terms HDMI and HDMI High Definition Multimedia interface, and the HDMI logo are trademarks or registered trademarks of HDMI Licensing, LLC in the U.S. and in other countries.
- Information and specifications in this document are subject to change without prior notice.

The other 4DG products



UHD Monitors



HD Monitors



DG-X 19" Series Video Wall Controller



DG-X6K5 Video Wall Controller